



**DEANS LANE**

WALTON ON THE HILL

[www.michael-everett.co.uk](http://www.michael-everett.co.uk)



# CHUCKS CORNER

DEANS LANE WALTON ON THE HILL KT20 7UD



3 RECEPTION ROOMS & CONSERVATORY



KITCHEN DINER



4 BEDROOMS



2 BATHROOMS & CLOAKROOM

APROX. 2216 FT<sup>2</sup> | 205.87 M<sup>2</sup> IN TOTAL

Located in the heart of the village and occupying a delightful half acre plot backing directly onto Walton Heath, a charming Scandinavian designed detached house, one of several similar houses built in Walton and Tadworth in the 1970's.

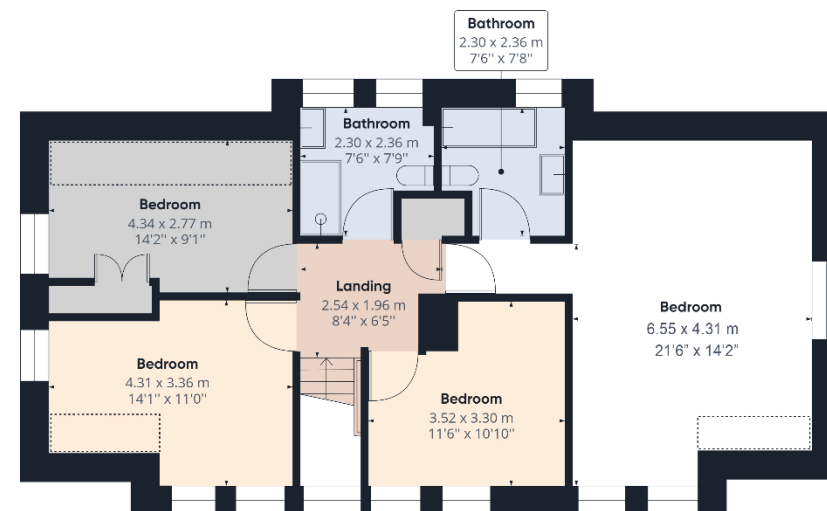
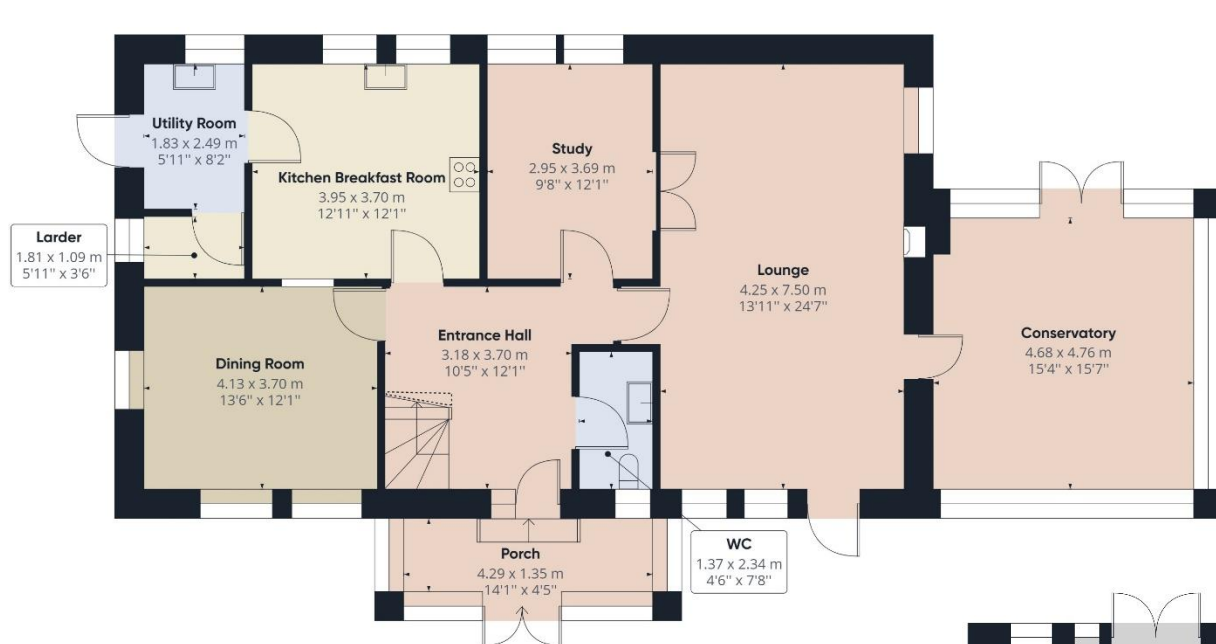
This characterful family home features spacious accommodation that includes a newly fitted double glazed entrance porch, a large square entrance hall, three reception rooms, a modern high quality double glazed conservatory, kitchen diner with separate utility room and a ground floor cloakroom. On the first floor there are 4 bedrooms and 2 bathrooms.

Outside, the house has a lovely approach being set well back from the road with a long drive and pretty gardens to the front. To the side and rear further garden areas enjoy complete seclusion and feature a number of outbuildings including a large outside office space currently used as a studio. There is parking for numerous cars in addition to a double garage.

ASKING PRICE: **£1,150,000** FREEHOLD











**WALTON ON THE HILL** 61 Walton Street, Walton-on-the-Hill, Surrey KT20 7RZ  
**01737 814877**



**IMPORTANT** We would inform prospective purchasers that these sales particulars have been prepared as a general guide only. A detailed survey has not been carried out, nor the services, appliances and fittings tested. Room sizes should not be relied upon for furnishing purposes and are approximate. If floor plans are included, they are for guidance only and illustration purposes only and may not be to scale. If there are any important matters likely to affect your decision to buy, please contact us before viewing the property.

michael-everett.co.uk